



Land Sales Specialists

Setting the trend for how Real Estate is sold in the Midwest.

www.BarnesRealty.com

18156 Hwy 59
Mound City, MO 64470
(660) 442-3177

1711 Oregon
Hiawatha, KS 66434
(785) 742-4580

1708 Prairie View Rd, Suite B
Platte City, MO 64079
(816) 219-3010

BB Estates 5.5 Acres +/- Homesite, Holt County, MO- Tract 2

Includes Survey!

Here's an affordable homesite with blacktop access and all the amenities nicely tucked away in the hills of scenic Holt County, Missouri.

LOCATION:

2 miles North of Oregon, MO on HWY 59 to CR 260 then West 2 1/2 miles. Tract is on the East side of the road.

PRICE:

\$90,750.00

IMPROVEMENTS:

Driveway is currently being installed

TAXES/TAXABLE ACRES:

To be determined

RENTAL STATUS:

Availability subject to the growing crops.

LISTING AGENT:

Jamie Barnes
(660) 851-1125 or
jamie@barnesrealty.com



BROKER PARTICIPATION:

Barnes Realty Company, as listing Broker, will gladly and fully cooperate with most licensed Real Estate Brokers to obtain a sale of the property on terms satisfactory to the current Owners. Brokers should call our office for details of our Co-Brokerage Policy.

Setting the trend for how Real Estate is sold in the Midwest.

This information is thought to be accurate; however, it is subject to verification and no liability for error and omissions is assumed. Barnes Realty has made every effort to present accurate information on the property presented. Most of the information comes from outside sources: County/Government/Seller and human error can occur. It's the Buyer's responsibility to satisfy himself with the information presented and to determine the information to be true and accurate and the property to be suited for his intended use. The listing may be withdrawn with or without approval. The Seller further reserves the right to reject any and all offers.

All inquiries, inspections, appointments, and offers must be sent through:

RICK BARNES, BROKER, BARNES REALTY COMPANY, 18156 HWY 59, MOUND CITY, MO 64470 PHONE NUMBER: 1-660-442-3177.

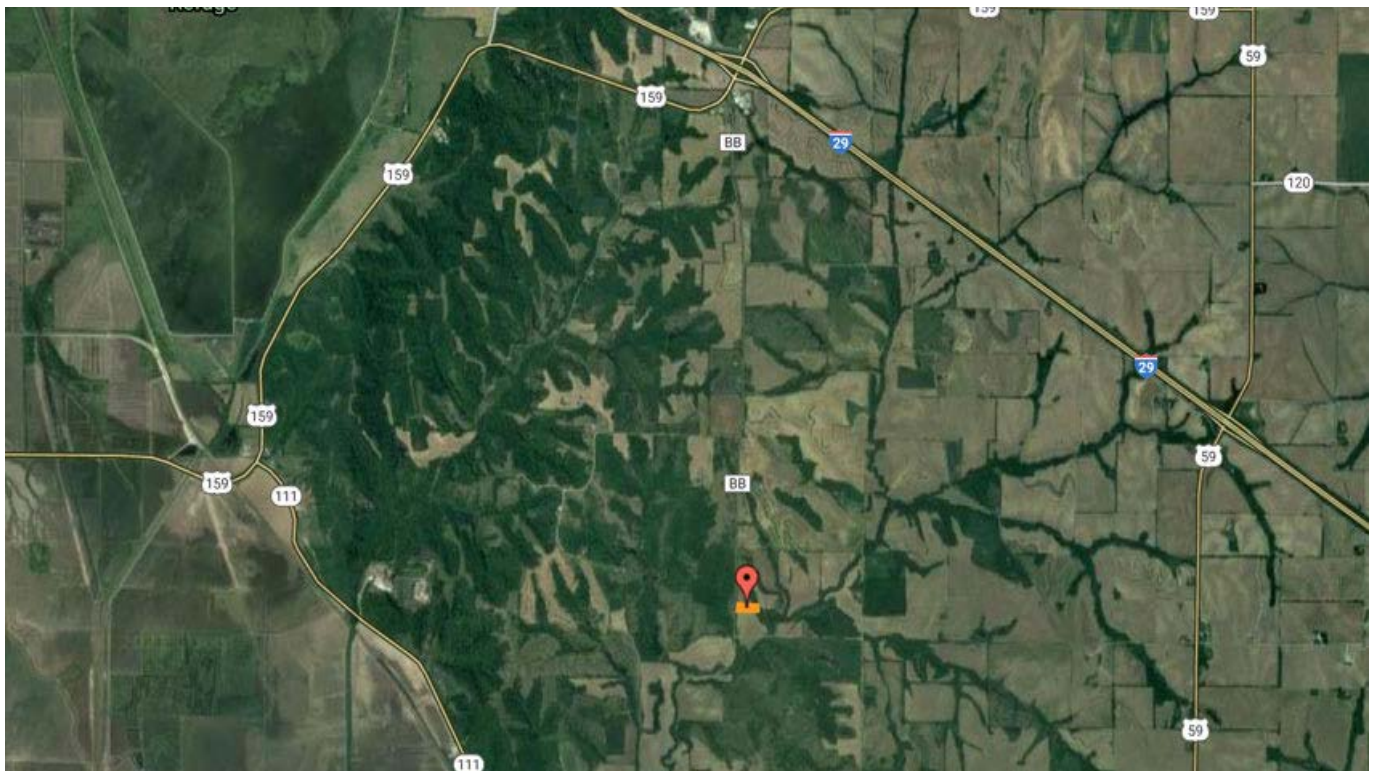
***5.5 Acres +/- Homesite, Holt County, MO
Aerial Photos***



***5.5 Acres +/- Homesite, Holt County, MO
Google Aerial Map***



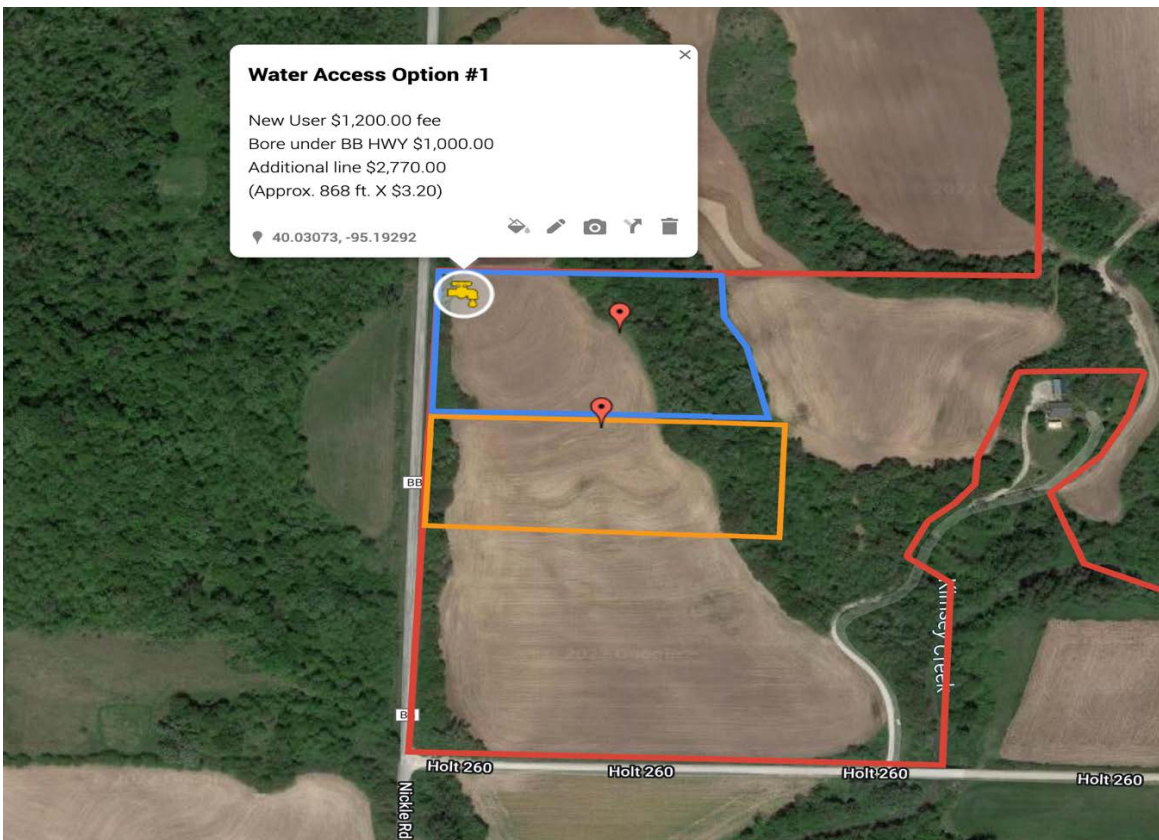
General Location Map



5.5 Acres +/- Homesite, Holt County, MO Driving Map



Rural Water Access Option



PHOTOS PROVIDED BY: RICK BARNES, BROKER, BARNES REALTY COMPANY, 18156 HWY 59, MOUND CITY, MO 64470 PHONE NUMBER: 1-660-442-3177.